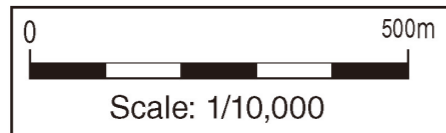
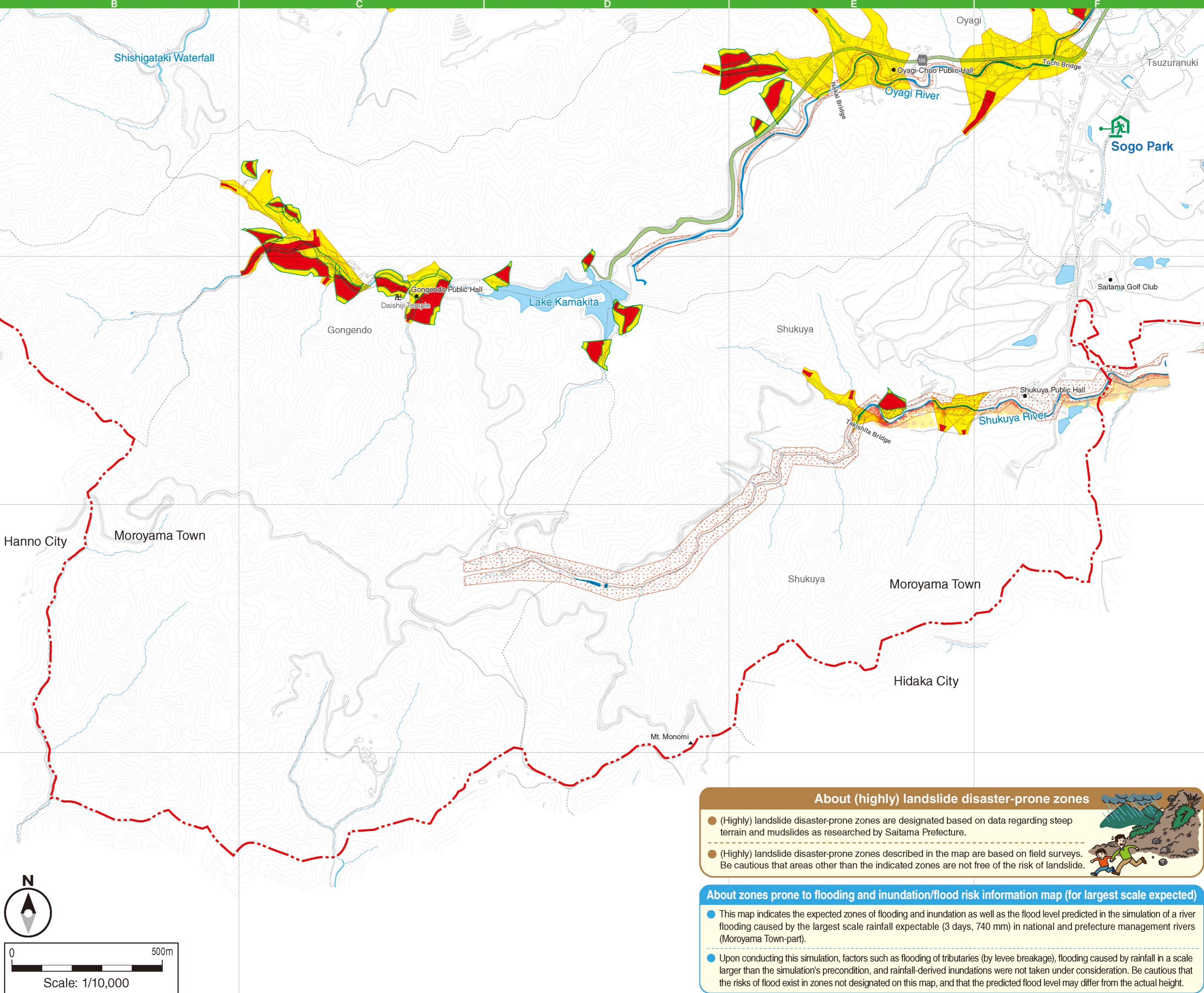


Landslide disaster-prone zones

| | |
|--|--|
| | Highly landslide disaster-prone zone (Mudslides) |
| | Highly landslide disaster-prone zone (Collapse of steep terrain) |
| | Landslide disaster-prone zone (Mudslides) |
| | Landslide disaster-prone zone (Collapse of steep terrain) |

Legend

| Map symbols | Indicated items | Map symbols | Indicated items |
|-------------|--|-------------|-----------------------------|
| | Designated emergency evacuation areas/shelters | | Town hall |
| | Welfare evacuation shelters | | Police stations/substations |
| | Flood-prone zone | | Fire stations |
| | Zone of possible building destruction and flooding | | Post offices |
| | Major local roads and prefectural highways | | Medical facilities |
| | Names of traffic lights and intersections | | Other landmarks |



About (highly) landslide disaster-prone zones

- (Highly) landslide disaster-prone zones are designated based on data regarding steep terrain and mudslides as researched by Saitama Prefecture.
- (Highly) landslide disaster-prone zones described in the map are based on field surveys. Be cautious that areas other than the indicated zones are not free of the risk of landslide.

About zones prone to flooding and inundation/flood risk information map (for largest scale expected)

- This map indicates the expected zones of flooding and inundation as well as the flood level predicted in the simulation of a river flooding caused by the largest scale rainfall expectable (3 days, 740 mm) in national and prefecture management rivers (Moroyama Town-part).
- Upon conducting this simulation, factors such as flooding of tributaries (by levee breakage), flooding caused by rainfall in a scale larger than the simulation's precondition, and rainfall-derived inundations were not taken under consideration. Be cautious that the risks of flood exist in zones not designated on this map, and that the predicted flood level may differ from the actual height.