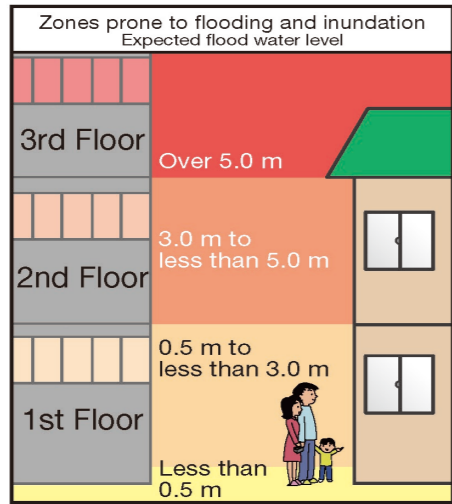


General Index Map (Flood Hazard Map)

Legend	
Map symbols	Indicated items
	Designated emergency evacuation areas/shelters
	Welfare evacuation shelters
	Zone of possible building destruction and flooding
	Town hall
	Major local roads and prefectural highways



Landslide disaster-prone zones	
	Highly landslide disaster-prone zone (Mudslides)
	Highly landslide disaster-prone zone (Collapse of steep terrain)
	Landslide disaster-prone zone (Mudslides)
	Landslide disaster-prone zone (Collapse of steep terrain)

Hazard map portal website

In order to protect lives from disasters, it is essential to understand what kind of disaster risks are around you and make preparation beforehand.

The hazard map portal website is open to the public in order to provide easier access and better use of the hazard map created by municipalities nationwide, disaster risk information, and various disaster prevention tips.

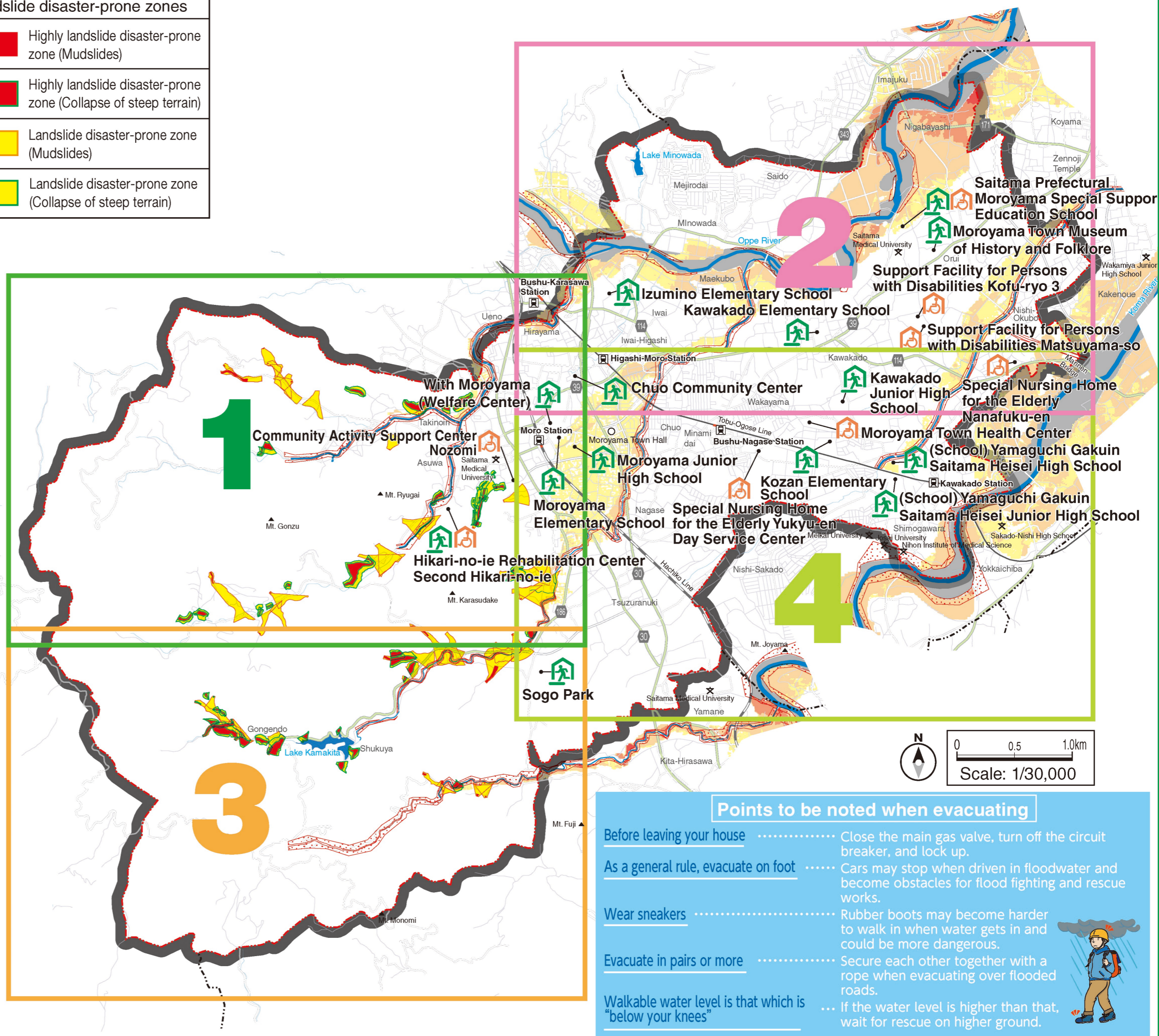
URL: <https://disaportal.gsi.go.jp/>

Layered hazard map

Disaster risk and other information can be superimposed freely.

Hometown hazard map

Search the hazard of your municipality nationwide.



Points to be noted when evacuating

- Before leaving your house** Close the main gas valve, turn off the circuit breaker, and lock up.
- As a general rule, evacuate on foot** Cars may stop when driven in floodwater and become obstacles for flood fighting and rescue works.
- Wear sneakers** Rubber boots may become harder to walk in when water gets in and could be more dangerous.
- Evacuate in pairs or more** Secure each other together with a rope when evacuating over flooded roads.
- Walkable water level is that which is "below your knees"** If the water level is higher than that, wait for rescue on higher ground.